



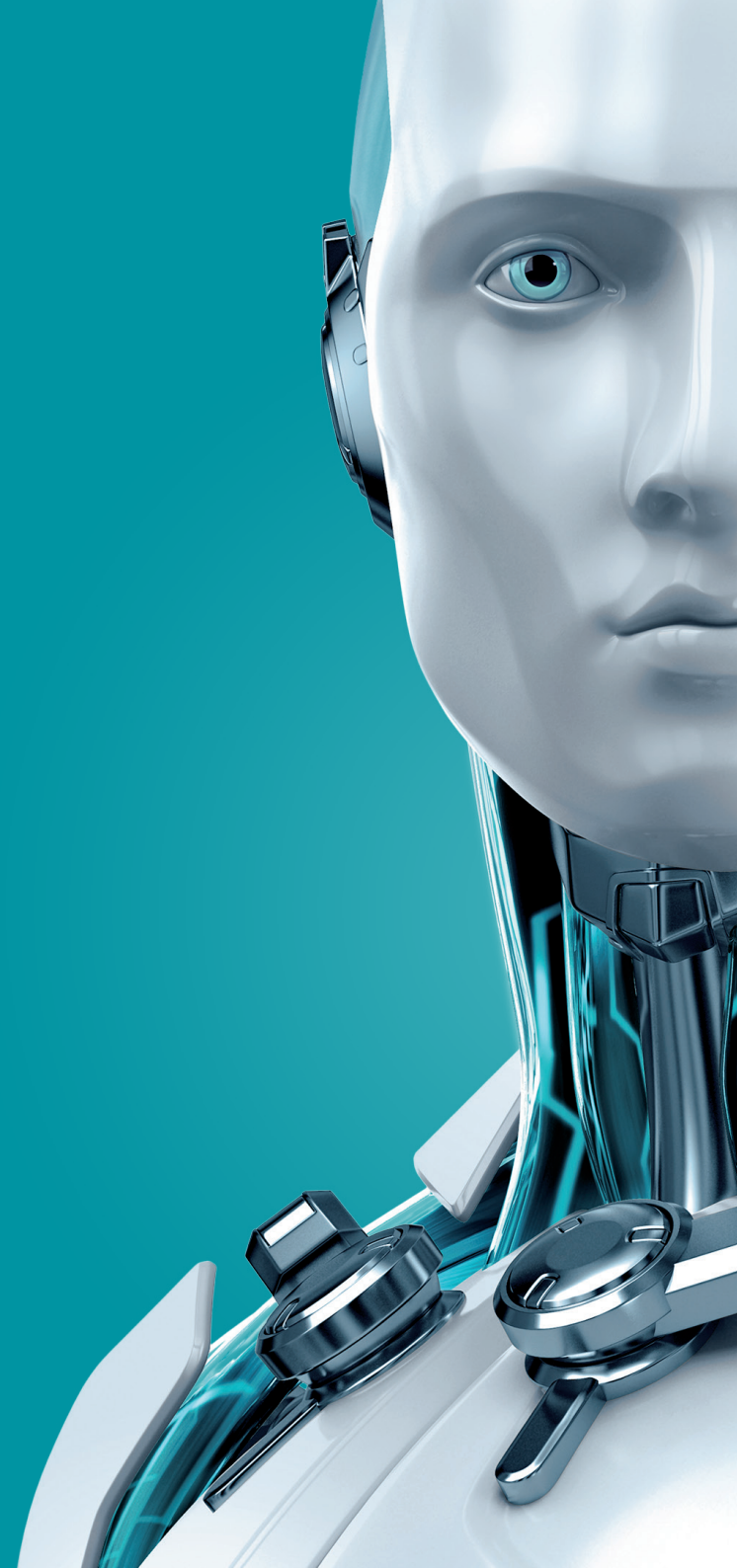
# INTERNET SECURITY

The best for everyday PC users



**2020**  
EDITION

ENJOY SAFER TECHNOLOGY™





INTERNET  
SECURITY

ESET Internet Security® delivers rock-solid protection for everyday web users, built on ESET's trademark best mix of detection, speed and usability.



### Legendary antivirus technology

Multi-layered security protects you against all types of online and offline threats and prevents malware spreading to other users.



### Banking and privacy secured

Prevent unauthorized access to your computer and misuse of your data. Stay safe while making online payments and accessing e-wallets.



### Protect your IoT and webcam

Test your home router and smart devices for vulnerabilities. See and block any unexpected access to your webcam.

**110M+**

safe users worldwide

**100+**

prestigious VB100 awards

**30+**

years of NOD32 technology

### Award-winning protection

Independent evaluators put ESET among the best in the industry, shown also by the record number of *Virus Bulletin's* VB100 awards.

### State-of-the-art technology

Advanced Machine Learning, DNA detections and a cloud-based reputation system are just some of the cutting-edge tools developed in our 13 R&D centers.

### Made in the European Union

ESET values, like integrity, reliability and independence, all stem from our European roots and are safeguarded by our private ownership structure.



## Making the internet safer for you to enjoy

Explore the great online, securely protected by ESET's award-winning detection technology. It's trusted by over 110 million users worldwide to detect and neutralize all types of digital threats, including viruses, ransomware, rootkits, worms and spyware. It also protects against techniques that seek to evade detection, and blocks targeted attacks and exploits. At the same time, its Anti-Phishing feature protects you from illegitimate websites that try to access your sensitive information, such as usernames and passwords.

## Enjoy the full power of your computer

Leaving more power to the programs you use daily, ESET Internet Security lets you play, work and browse the internet without slowdowns. Stay unplugged and online longer with battery-saving mode, and enjoy gaming without distracting pop-ups.

|  |  |
|--|--|
| <b>Antivirus and Antispyware</b>   | Provides proactive protection against all types of online and offline threats and prevents malware spreading to other users.   |
| <b>Advanced Machine Learning</b> <small>NEW</small>                          | In addition to ESET Machine Learning in the cloud, this proactive layer runs locally. It is specifically designed to detect advanced, never seen before malware, while having a low impact on performance.   |
| <b>Exploit Blocker</b>   | Blocks attacks specifically designed to evade antivirus detection and eliminates lockscreens and ransomware. Protects against attacks on web browsers, PDF readers and other applications, including Java-based software.                                    |
| <b>Advanced Memory Scanner</b>   | Enables improved detection of persistent malware that employs multiple layers of encryption to conceal its activity.   |
| <b>Cloud-Powered Scanning</b>  | Speeds up scans by whitelisting safe files based on the ESET Live Grid® file reputation database. Helps to proactively stop unknown malware based on its behavior, by comparing it with our cloud-based reputation system.                                   |
| <b>Scan While Downloading Files</b>  | Decreases scanning time by scanning specific file types – such as archives – during the download process.  |
| <b>Idle-State Scanning</b>   | Aids system performance by performing in-depth scans when your computer is not in use. Helps detect potential inactive threats before they can cause damage.   |
| <b>Host-Based Intrusion Prevention System (HIPS)</b> <small>IMPROVED</small> | Lets you customize the behavior of the system in greater detail with focus on behavioral detection. Gives you the option to specify rules for system registry, active processes and programs to fine-tune your security posture.                             |
| <b>Script-Based Attack Protection</b>  | Detects attacks by malicious scripts that try to exploit Windows PowerShell. Also detects malicious JavaScripts that can attack via your browser. Mozilla Firefox, Google Chrome, Microsoft Internet Explorer and Microsoft Edge browsers are all supported. |
| <b>UEFI Scanner</b>  | Protects from threats that attack your computer on a deeper level, even before the start of Windows - on systems with the UEFI system interface.   |

|                                  |   |
|----------------------------------|---|
| <b>Small System Footprint</b>    | Maintains high performance and extends the lifetime of hardware. Fits any type of system environment. Saves internet bandwidth with extremely small update packages.  |
| <b>Gamer Mode</b>                | ESET Internet Security automatically switches to silent mode if any program is run in full-screen. System updates and notifications are postponed to save resources for gaming, video, photos or presentations. |
| <b>Portable Computer Support</b> | Postpones all non-actionable pop-up windows, updates and system-hungry activities to preserve system resources so that you can focus on gaming or films.  |

## Protect your privacy

Stop hackers from misusing your passwords and stay safe while online banking, making online payments and accessing web-based crypto-wallets. Enjoy safer connections, protect your webcam and home Wi-Fi router from intruders, and protect your private data from ransomware. Ensure your privacy by actively testing your router-connected smart devices.

|   |  |
|---|--|
| <b>Ransomware Shield</b>  | Blocks malware that tries to lock you out of your personal data and then asks you to pay a 'ransom' to unlock it.  |
| <b>Webcam Protection</b>  | Constantly monitors all the processes and applications running on your computer, to see which ones want to use your webcam. It alerts you to any that unexpectedly try to access your webcam, and lets you block them.   |
| <b>Connected Home Monitor</b> <small>IMPROVED</small>           | Enables you to test your home router for vulnerabilities, such as weak passwords or out of date firmware, and provides you with guidance and an easy-to-access list of router-connected devices (smartphone, IoT, etc.) with improved device detection, to show you who's connected. Enables you to scan smart devices for vulnerabilities, and gives you suggestions on how to fix possible issues. |
| <b>Firewall</b>   | Prevents unauthorized access to your computer and misuse of your personal data.  |
| <b>Network Attack Protection</b>                                | In addition to Firewall, automatically protects your computer from malicious network traffic, blocking threats revealed by dangerous traffic patterns.   |
| <b>Banking &amp; Payment Protection</b> <small>IMPROVED</small> | Features a special secured browser through which you can safely pay online. Automatically protects you on internet banking and while accessing web-based crypto-wallets. Encrypts the communication between the keyboard and the browser for safer transactions and notifies you when using the feature on public Wi-Fi. Protects you from keyloggers.   |
| <b>Botnet Protection</b>  | Added layer of security that protects against botnet malware – preventing your computer from being misused for spam and network attacks. Benefit from a new type of detection thanks to Network Signatures, for even faster blocking of malicious traffic.   |
| <b>Anti-Phishing</b> <small>IMPROVED</small>                    | Protects your privacy and assets against attempts by fraudulent websites to acquire sensitive information such as usernames, passwords or banking details, or feed you fake news from seemingly reputable sources. Protects you from homoglyph attacks (replacing characters in links with ones that look similar but are actually different).   |
| <b>Out-of-Home Network</b>                                      | Alerts you when connecting to an unknown network and prompts you to switch to the Strict Protection mode. Makes your device invisible to other computers connected to the same network.  |
| <b>Device Control</b>   | Allows you to prevent unauthorized copying of your private data to an external device. Allows you to block storage media – CDs, DVDs, USB sticks, and disk storage devices. Lets you block devices connecting via Bluetooth, FireWire and serial/parallel ports.   |
| <b>Antispam</b>   | Keeps unwanted emails from clogging your mailbox.  |

## Keep your kids safe on the internet

Show kids only the good side of the internet with Parental Control, preventing them from being exposed to offensive online content. Block more than 20 website categories, or add individual sites to the blacklist.

|                         |   |
|-------------------------|---|
| <b>Parental Control</b> | Gives you the option to choose from predefined categories according to the age of your kids. Lets you set a password to protect settings against modification as well as prevent unauthorized product uninstallation. |
|-------------------------|---|

## Anti-Theft – Stay safer by tracking and locating your missing computer

Protect your laptop in case it gets lost or stolen, and increase the chances of its retrieval.

## Install and forget, or customize to meet your exact requirements

Delivering top protection right from the start with its default settings, ESET Internet Security keeps you informed about potential security issues and lets you address them directly from the main screen. Its sleek user interface is designed to let you easily set up all routine tasks. In addition, you can fine-tune your security profile with more than 150 detailed settings.

## Enjoy more control over your licenses at my.eset.com

Create a free my.eset.com account and enjoy an instant overview of the status of your licenses and connected devices.

|                                    |   |
|------------------------------------|---|
| <b>Location Tracking</b>           | Lets you mark a device as missing via the ESET® Anti-Theft web interface at my.eset.com to initiate automatic monitoring. Displays position on a map based on the Wi-Fi networks in range when the device comes online. Allows you to access the gathered information via ESET Anti-Theft at my.eset.com. |
| <b>Laptop Activity Watch</b>       | Allows you to watch thieves via your laptop's built-in camera. Collects snapshots of the missing laptop's screen. Saves all recent photos and snapshots to the web interface at my.eset.com.  |
| <b>Anti-Theft Optimization</b>     | Lets you easily set up/configure Anti-Theft for maximum protection of your device. Makes it easy to configure Windows auto-login and operating system account passwords. Helps you increase the level of security by prompting you to modify key system settings.   |
| <b>One-Way Messaging</b>           | At my.eset.com, create a message and have it displayed on your missing device – to increase the chances of its retrieval.   |
| <b>One-Click Solution</b>          | Lets you view your protection status and access the most frequently used tools from all screens. Offers comprehensive, one-click solutions to potential issues.   |
| <b>Smooth Product Upgrades</b>     | Benefit from new protection technologies as soon as they become available, for a continuously high level of security  |
| <b>Settings for Advanced Users</b> | Offers in-depth security settings to fit your needs. Allows you to define maximum scanning depth, scanning time, size of the scanned files and archives, and much more.   |
| <b>ESET SysInspector®</b>          | An advanced diagnostic tool that captures critical information from the system to troubleshoot a broad range of security and compatibility issues.  |
| <b>Security Report</b>             | Gives you a monthly insight into how ESET protects your computer. This summary includes information about detected threats, blocked web pages, intercepted spam emails, blocked webcam accesses and more.   |
| <b>License Manager</b>             | View, manage and associate your licenses and ESET installations straight from our easy-to-use my.eset.com portal.   |

# MULTIPLATFORM SOLUTION

## Secure All Your Devices

Whether you run a PC, Mac, Linux machine or Android smartphone, tablet or TV, protect them all with ESET's highest level of Security.

## Protect Your Children Online

With **ESET Parental Control for Android**, which comes as part of ESET Multi-Device Security and covers a multiple number of kids' devices, you can help your children manage their online experiences safely – and in a child-friendly way that they will understand.

## One Convenient License

A single license covers all your devices, and protection can be transferred at any time to a new device without the hassle of getting a new license.



## CHOOSE THE SECURITY YOU NEED. PROTECT 5 OR 3 DEVICES.



### Computers

Windows  
Mac  
Linux

#### Computers:

- WINDOWS:
- ESET Internet Security
  - ESET NOD32 Antivirus

#### MAC:

- ESET Cyber Security Pro
- ESET Cyber Security

#### LINUX:

- ESET NOD32 Antivirus



### Smartphones, Tablets or TV

Android

#### Smartphones:

- ESET Mobile Security for Android
- ESET Parental Control for Android

#### Android Tablets:

- ESET Mobile Security for Android
- ESET Parental Control for Android

#### Android TV:

- ESET Smart TV Security

## INTERNET SECURITY

- ✓ Antivirus
- ✓ Advanced Machine Learning
- ✓ Antispyware
- ✓ Anti-Phishing
- ✓ Banking & Payment Protection
- ✓ Anti-Theft
- ✓ Firewall
- ✓ Parental Control
- ✓ Device Control
- ✓ Antispam
- ✓ Exploit Blocker
- ✓ Botnet Protection
- ✓ Security Report
- ✓ Advanced Memory Scanner
- ✓ Network Attack Protection
- ✓ Script-Based Attack Protection
- ✓ UEFI Scanner
- ✓ Small System Footprint
- ✓ Gamer Mode
- ✓ Free Technical Support
- ✓ Connected Home Monitor
- ✓ Webcam Protection
- ✓ Ransomware Shield
- ✓ License Manager

## SMARTPHONE & TABLET\* SECURITY

- ✓ Antivirus
- ✓ Remote Lock
- ✓ Remote Siren
- ✓ GPS Localization
- ✓ Camera Snapshots
- ✓ Low Battery Alert
- ✓ SIM-Matching
- ✓ Call Filter
- ✓ Remote Wipe
- ✓ Proactive Anti-Theft
- ✓ Anti-Phishing
- ✓ Custom On-Screen Message
- ✓ Location Tracking
- ✓ Free Technical Support

## PARENTAL CONTROL FOR ANDROID

- ✓ Web Guard
- ✓ Application Guard with Time Management
- ✓ Time Budget
- ✓ Geofencing
- ✓ Child Unblock Request
- ✓ Child Locator
- ✓ Multiple children's devices support

[www.eset.com](http://www.eset.com)

Copyright © 1992–2019 ESET, spol. s r. o. ESET, ESET logo, ESET android figure, NOD32, ESET Smart Security, SysInspector, ThreatSense, ThreatSense.Net, LiveGrid, LiveGrid logo and/or other mentioned products of ESET, spol. s r. o., are registered trademarks of ESET, spol. s r. o. Windows® is a trademark of the Microsoft group of companies. Other here mentioned companies or products might be registered trademarks of their proprietors. Produced according to quality standards of ISO 9001:2000.